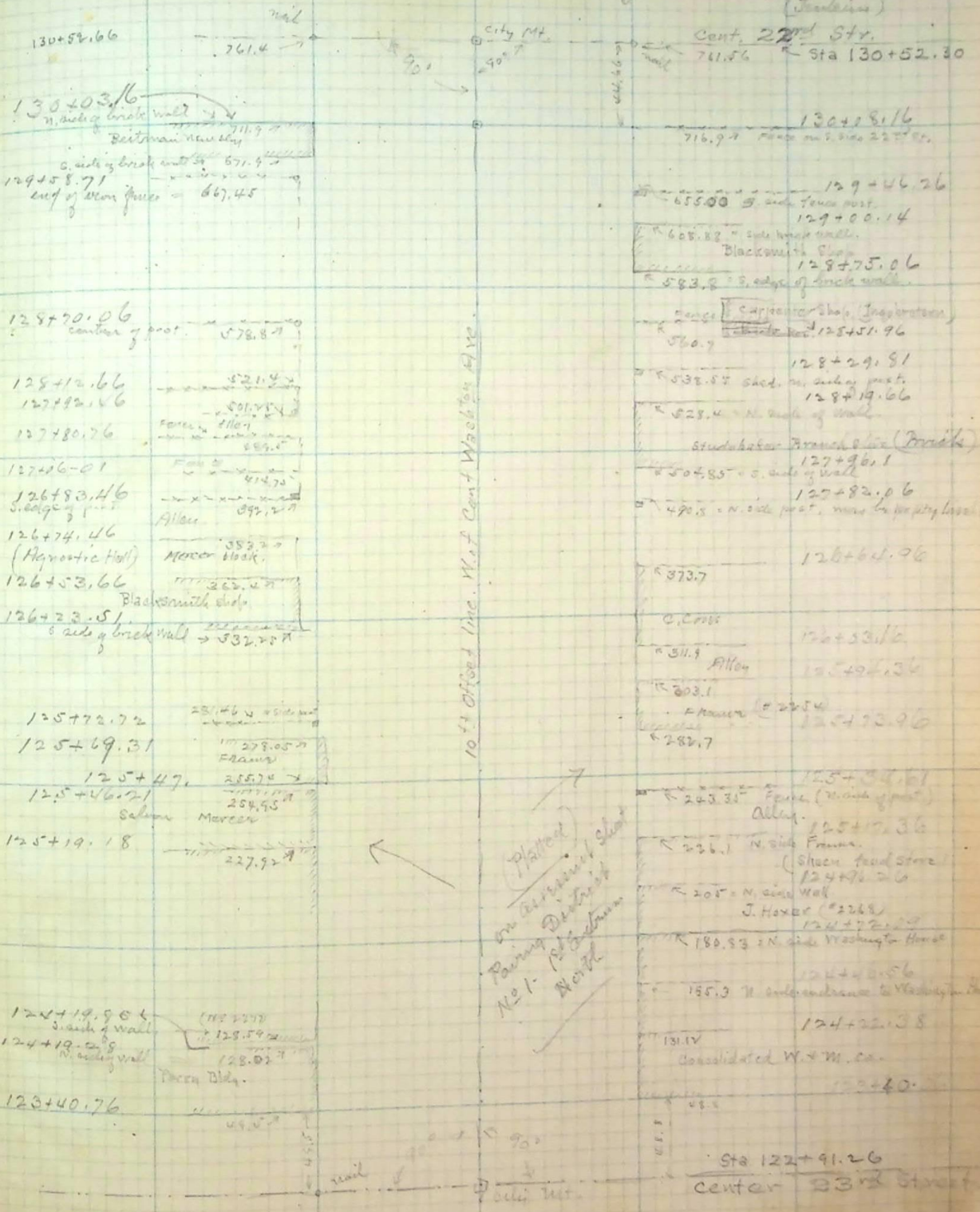


Apr. 15-1903
 Notes on location of possessory lines on lot Washington Bldg. bet. 22nd & 23rd Sts. (Washington)



130+52.66

761.4

city Mt. 90°

Cent. 22nd Str. 741.56

Sta 130+52.30

130+203.6
 n. side of brick wall
 Beitman's survey 711.9
 s. side of brick wall 671.9
 129+58.71
 end of iron fence = 667.45

130+58.16
 716.97

128+70.06
 center of post 578.87

125+12.66
 127+92.66

127+80.26

127+86-01

126+83.46
 s. edge of post

126+74.46
 (Hypnotic Hall) Never Mark.

126+53.66
 Blacksmith shop

126+23.51
 s. side of brick wall → 532.57

125+72.72
 23.46 = side wall

125+69.31
 Frame

125+47.1
 125+46.71
 Salmon Mercant

125+19.18
 227.92

124+19.96
 s. side of wall

124+19.28
 N. side of wall
 Town Bldg.

123+40.76

129+46.26
 655.00 s. side fence post

129+00.14
 605.82 = s. side brick wall
 Blacksmith Shop

129+75.06
 583.8 = s. edge of brick wall

128+29.91
 560.7
 Carpenter Shop, Incorporated
 125+51.96

128+19.66
 532.57 shed on s. side post

127+96.1
 529.4 = N. side of wall

127+82.06
 504.85 = s. side of wall
 Studenator Branch line (Bridle)

126+64.96
 470.8 = N. side post, near to property line?

126+53.16
 373.7

125+49.36
 311.9
 Allen

125+32.96
 303.1
 Frame

125+17.36
 282.7
 22.54

125+15.36
 243.31
 Frame (N. side post)
 Alley

124+96.26
 236.1 N. side Frame
 (Shed food store)

124+72.28
 205 = N. side wall
 J. Hoxer (2228)

124+40.56
 180.93 = N. side Washington House

124+22.38
 155.3 = N. side entrance to Washington Bldg.

124+40.
 131.14
 Consolidated W. & M. Co.

Sta 122+41.26
 center 33rd Street

10th Street line N. of Cent. Washington Ave.

Platted on original plat of Rainier District No. 1 - 1st Subdivision North

city Mt.